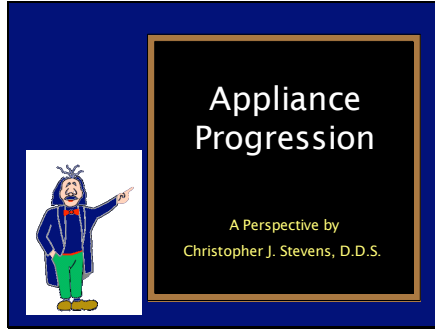
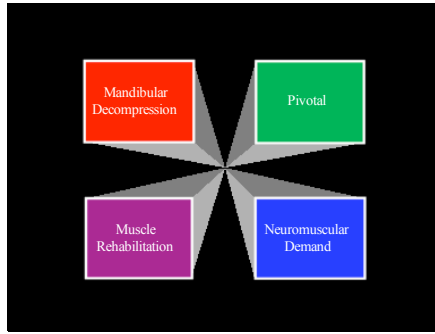


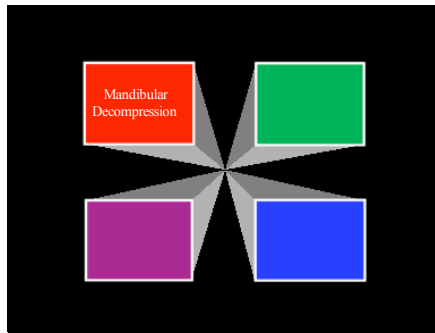
Slide 1



Slide 2



Slide 3



Slide 4

Mandibular Decompression Appliance

May be utilized
in the
diagnosis & treatment
of all
occlusal dysfunctions &
cranio-mandibular disorders

Slide 5

Mandibular Decompression Appliance

Bioplast Splint
Soft Pivot Appliance
Pain Release Splint
Temporary Diagnostic Appliance

Slide 6

Mandibular Decompression Appliance

Bioplast...Forgiving
Mandibular...Esthetic / Phonetic
Pivotal...Frees Mandible
Bilateral Balance...Condylar Support
Max. Molar Contact...Cranial Pump
Vacuum Made...Quick & Inexpensive

Slide 7

Mandibular Decompression Appliance

Primary Indication -
Pain

Secondary Indication -
Dysfunction

Slide 8

Mandibular Decompression Appliance

Rationale

- Proprioceptive deprogramming
- Differential condylar support
- Aids vertical dimension correction
- Conservative (but reversible?)
- Combination appliance

Slide 9

Mandibular Decompression Appliance

Armamentarium

Bioplast
Lathe Chamois Polishing Wheel
Thick Articulating Paper
Scissors
Laboratory Burs
Vacuum Former

Slide 10

Mandibular Decompression Appliance

Fabrication technique requires ...

- Trimmed model
- Forming
 - Polishing
 - Balancing

Slide 11

Mandibular Decompression Appliance

Possible complications include soreness in the

Teeth and Jaw

Neck and Back

due to a change in the physiologic adaptive attempts.

Slide 12

Mandibular Decompression Appliance

Indications	Contraindications
<ul style="list-style-type: none">• Pain• Dysfunction• Diagnosis• Reversal	<ul style="list-style-type: none">• None

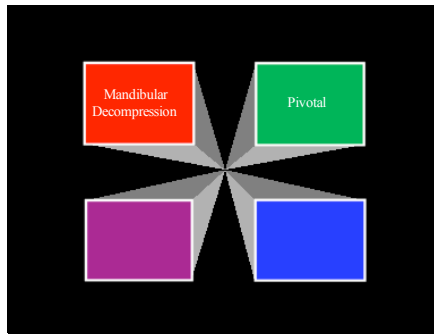
Slide 13

Mandibular Decompression Appliance

Summary & Advantages

- Diagnostic & Therapeutic
- Comfortable & Conservative
- Esthetic & Phonetic
- Simple Fabrication & Insertion
- Inexpensive
- Excellent Compliance & Versatility

Slide 14



Slide 15

Hard Pivotal Appliance

Rationale

- Used following MDA
- Allows further decompression of joints
- Assists in reprogramming vertical, A -P and lateral trajectory
- Worn 24 hrs including eating
- Very adjustable

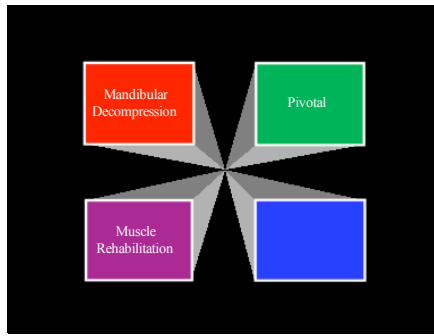
Slide 16

Hard Pivotal Appliance

Armanentarium

- Vacuum Form Blank
- Arbor Band and Laboratory Burs
- Articulating Paper
- Vacuum Former
- Properly Trimmed Cast
- Orthodontic Resin

Slide 17



Slide 18

Muscle Rehabilitation Appliance

Rationale

- Used following hard pivotal appliance
- Improves muscle tone
- Improves mandibular stability
- Worn 24 hrs including eating
- Very adjustable

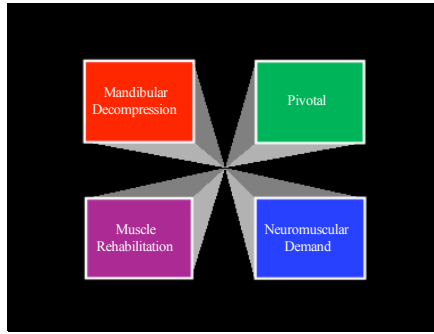
Slide 19

Muscle Rehabilitation Appliance

Armaamentarium

Arbor Band and Laboratory Burs
Articulating Paper
Orthodontic Resin

Slide 20



Slide 21

Neuromuscular Demand Appliance

Rationale

- Used following muscle rehabilitation appl
- Predicts mandibular position from which stabilization can occur
- Can be used for long term maintenance

Slide 22

Neuromuscular Demand Appliance

Amamentarium

Arbor Band and Laboratory Burs
Articulating Paper
Orthodontic Resin

Slide 23

Neuromuscular Demand Appliance

Values: 1.0mm per division Length: 2.0mm per division Amplitude: 2.0mm per division
PLEASE CLIP THE PROTRUSOR AND APPL. RES.

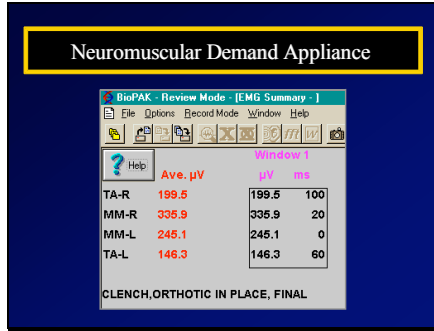
Slide 24

Neuromuscular Demand Appliance

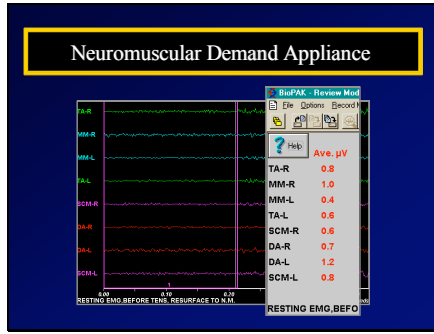
TA-R
MM-R
MM-L
TA-L

CLENCH/ORTHOTIC IN PLACE_FINAL
Seconds

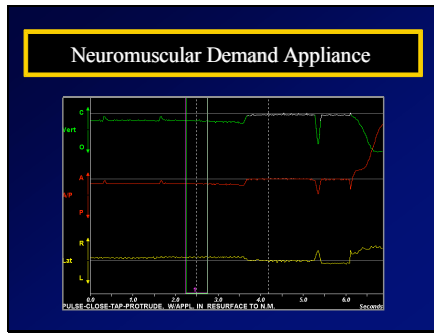
Slide 25



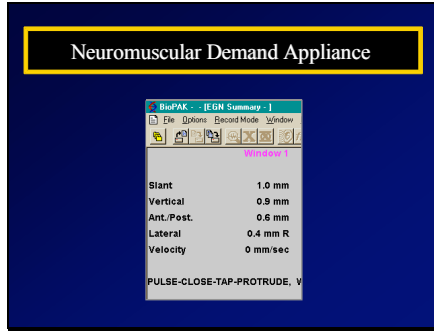
Slide 26



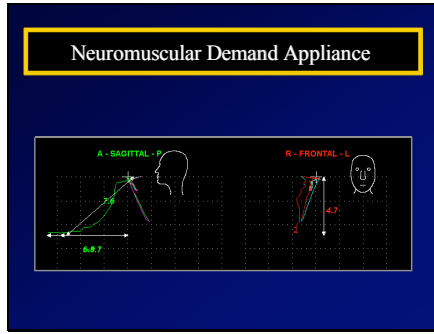
Slide 27



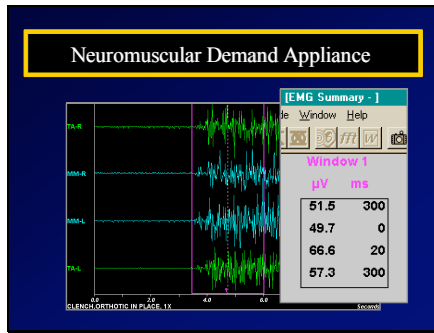
Slide 28



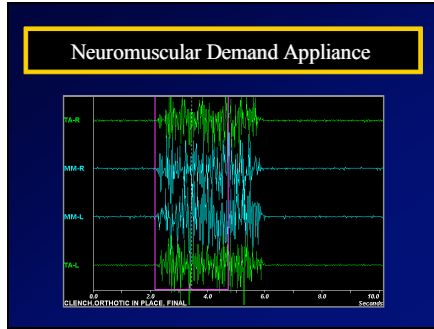
Slide 29



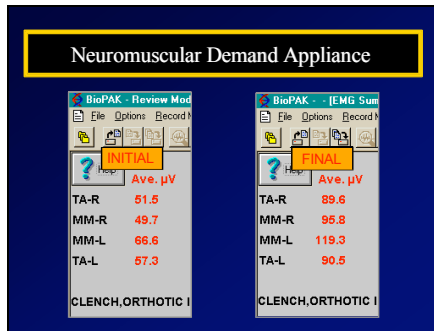
Slide 30



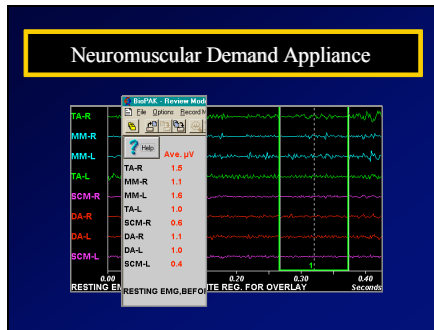
Slide 31



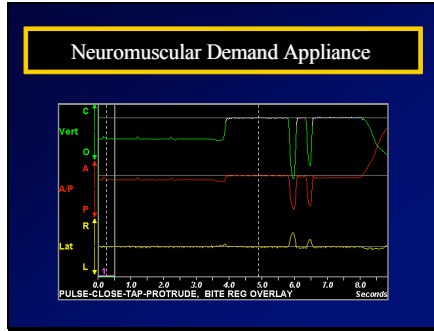
Slide 32



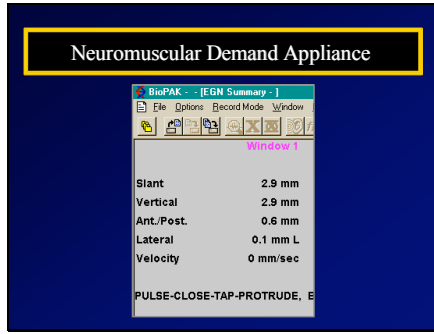
Slide 33



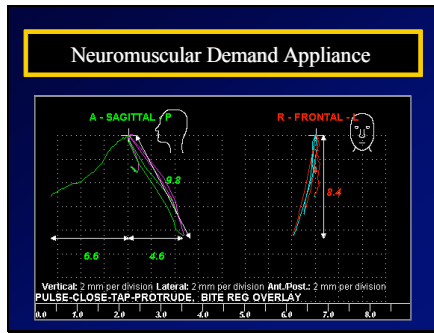
Slide 34



Slide 35



Slide 36



Slide 37

